

LP-X Series Features

Accessories for your LP-X Series Console

	LP-X24	LP-X48
DMX Channels	512	1024
Conventional Control Channels	96	192
Manual Channel Faders	2 Banks of 12	2 Banks of 24
LTP Fixture Capacity	48	48
Playback Submasters	6 x 20 Pages	12 x 20 Pages
Playback Cue Capacity	Unlimited	Unlimited
Playback & Cue Titling	Yes	Yes
Theatrical Cue Stack w/Point Cues	1000 Cues	1000 Cues
Keypad, Go, Back, & Hold Next Cue Functions	Yes	Yes
Chase Function	120 Patterns	240 Patterns
VGA Output	Standard	Standard
15" LCD Flat Style-Touch Screen	Optional	Optional
Keyboard Support	Standard	Standard
Mouse/Trackball Support w/3rd Wheel Functions	Standard	Standard
On Board Illuminated Trackball	No	Yes
Internal 3.5" Floppy Disk Drive	Standard	Standard
Numerical Keypad	Yes	Yes
Moving Light Libraries w/Auto Patch	Yes	Yes
Internal Fixture Creation	Yes	Yes
Labeled Color, Beam, & Focus Palettes	Unlimited	Unlimited
Individual CBIF Fade Times	Yes	Yes
Effects Generator with Color, Beam, & Focus	Yes	Yes
Proportional Softpatch	Yes	Yes
Buffered 5 Pin XLR DMX Output	2 (2 Per Universe)	4 (2 Per Universe)
MIDI System In/Out	Yes	Yes
Audio Input	Pending	Pending
110/240V Internal Power Supply	Yes	Yes
2ea Littlite Worklamps	Included	Included
Console Dust Cover	Included	Included
Offline Software	Yes	Yes

Dimensions
LP-X24 Weight-lbs (boxed) 29
 Height, Width, Depth in inches 4.75x26.5x18
LP-X48 Weight-lbs (boxed) 36
 Height, Width, Depth in inches 4.75x36.5x18

FULL TWO YEAR WARRANTY

For a period of two years from the date of sale, Leprecon, LLC, will replace any defective parts and will repair any defective module returned to the factory prepaid, without charge for parts or labor. Please consult your dealer for full warranty details.



◀ LP-X24

Clockwise starting at top right.
Touch Screen Monitor
 Leprecon Part #27-0050

Littlite 12XR-HI-4

Three Button Optical Scroll Wheel Mouse
 (Not shown)
 Leprecon Part #27-0017

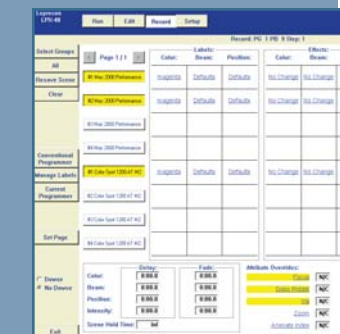
Black Mini Keyboard
 Leprecon Part #17-1002

15" Black Flat Screen LCD Monitor
 Leprecon Part #27-0018

FLIGHT CASES
LP-X24 Flight Case
 (Not shown)
 Leprecon Part #25-0105

LP-X48 Flight Case
 (Not shown)
 Leprecon Part #25-0110

Touchscreen Monitor Flight Case
 (Not shown)
 Leprecon Part #25-0115



Moving Light Programmer Screen



Keypad Section



Run Screen



Leprecon[®] LP-X Series X Programming

Touchscreen Interface

VGA Output

Effects Generator

Moving Light Libraries with Auto Patch

Color, Beam and Focus Labels

Individual CBIF Fade Times

Conventional Fixture Control

Designed with the lighting designer and programmer in mind, the LP-X Series consoles have powerful features that are easy to access.

Presenting the Simply Powerful LP-X24 and LP-X48 Console. Designed with the Lighting Designer & Programmer In Mind

MODE CONTROL SECTION:

The LP-X Series follows the Run, Record, Edit, Set-up paradigm allowing the user to quickly access features in one of four modes.

SET-UP MODE: Allows the LP-X to be configured based on user preferences. An extensive fixture library contains personalities for moving lights that can be automatically patched and assigned.

RUN MODE:

Permits simultaneous playback of 6 or 12 cue lists that contain both moving lights and dimmers. Intelligent fixture playback includes separate fade times for color, beam, focus, and intensity attributes. Cue stack includes cue list link.

RECORD MODE:

Using the LP-X Series "programmer", users can toggle in and out of record mode and maintain data that can be recorded onto a playback (cue list) or into the cue stack with the touch of a button.

EDIT MODE:

The LP-X Series allows blind preview and edits of any recorded state and gives the user the ability to override and edit cue lists without interruption.

STACK SECTION:

Build cue stacks that link to playback cue lists or chases with programmable in / out fade times. Cues are triggered with Go, Hold, and Back buttons. Manual crossfader can "capture" cues and override fades, if non-scripted events occur.

MASTER SECTION:

Grandmaster, Manual Scene Master, Rate Master + Tap, and Blackout Button allows for quick access to global functions.

KEYPAD SECTION:

Set up patch tables, call up fixtures and groups, and enter cue programming / playback commands, including channel and level information, from the numeric keypad.

DISPLAY SECTION:

All console functions are available from a graphic 64 x 240 backlit LCD, which incorporates softkeys for menu selection.

LITTLITE® CONTROL AND CONNECTOR:

Brightness control and connectors for the Littlite task lamps. Two 4 pin right angle Littlites are provided with the LP-X Series.

MANUAL SCENE SECTION:

Faders and bump buttons provide quick access to dimmers. Momentaries (bumps) act as intelligent fixture selects in record mode. An exclusive master is provided for the manual section.

PLAYBACK SECTION:

The playback section consists of 20 pages of 6 or 12 playbacks that contain cue lists of both dimmers and intelligent fixtures. Playbacks can be toggled between chase / cue list mode. "Page Freeze" allows users to access looks across multiple pages.

TRACKBALL

Illuminated trackball allows for easy point and click navigation for all console functions. Users can easily set pan and tilt position of moving lights.

CONVENTIONAL FIXTURE CONTROL:

Control of conventional instruments has never been easier. Whether you prefer Keypad or Fader control of your dimmers, the LP-X Series will meet your needs. With instant access to 96 dimmer control channels on the LP-X24 or 192 dimmer control channels on the LP-X48, everything is within your reach.

VGA OUTPUT WITH LIVE OVERRIDE:

VGA output offers increased viewing and access to Show Playback, Recording & Editing.

Live Override Function allows the user to easily make immediate changes at a second's notice.

EFFECTS GENERATOR:

Built in and user definable Color, Beam & Focus effects. Complex movements including color and beam effects can be attained with a few simple button presses.

Movement Patterns Include: Circle, Triangle, Rectangle, Polygon, Sweep Fan, & Ballyhoo. Color & Beam effects include label chases with definable fade & hold times.

Quick and easy adjustments can be seen in real time. Multifaceted effects can be assigned as single cue step with a cue list on a playback or within a theatrical cue stack.

TOUCH SCREEN INTERFACE:

Active Matrix TFT 15" Flat Screen interface places fixtures, labels (palettes), effects, timing parameters, plus much more at your fingertips. Antiglare / Impact resistance glass touch surface utilizing Surface Wave Technology offers years of precise and reliable service.

time is finite...potential isn't.

The Leprecon® LP-X Series Console has been designed with the lighting designer and programmer in mind. Powerful features that are simple to access, like Color, Beam, Focus, and Intensity presets with individual fade times for each attribute, make this a one of a kind console for small to medium sized productions.

A moving light console with fader and keypad access to dimmer channels, the X (cross) Programming LP-X allows users to quickly program both intelligent lights and dimmers, in an "on the fly" live performance or theatre environment. With twenty pages of preset playbacks and the ability to run six or twelve cue lists at once, that include both moving lights and dimmers, the possibilities are limitless.



Back View of the LP-X

Featuring:

- 1 Littlite® Gooseneck Lamps (Two)
- 2 DMX-512 Universe 2
- 3 DMX-512 Universe 1
- 4 Serial Port for Touchscreen
- 5 Mouse Port
- 6 VGA Output
- 7 Keyboard Port
- 8 MIDI In / Out
- 9 Audio In
- 10 Power Input
- 11 3.5" Disk Drive